

Deliver storage services with confidence, performance, and reliability.



Test before you buy.
Test before you deploy.
Test before you change.



SwiftTest provides the industry's premiere test solution for validating storage services infrastructure—whether you're delivering internally or externally. Generating high-volume CIFS/SMB, NFS, iSCSI, and HTTP traffic, the system includes a sophisticated user interface with a library of sample tests, plus comprehensive reporting and automation.

Buying.

- Evaluate for real using your own mix of traffic.
- Drive the deal with side-by-side vendor comparisons.
- Right-size your purchase, buying just what you need.

Deploying.

- Test storage software upgrades before deploying.
- Understand the impact of network infrastructure changes.

Changing.

- Test systems to the limit and determine breaking points.
- Anticipate service expansion and test for growth.
- Plan reconfigurations or purchases with real, actionable data.



SwiftTest 3000

Eight 1GE test ports and one 1GE management port.
Generates over 14.4Gbps of traffic.



SwiftTest 5000

Two 10GE test ports and one 1GE management port.
Generates over 34Gbps of traffic.

Protocols Supported

- CIFS/SMB 1 and SMB 2.X over TCP and NetBT
- NFS: v2, v3, and v4 Client
- iSCSI Initiator
- HTTP/S Client and Server
- Authentication: NTLM, Kerberos, and CHAP

Scenarios

- Granular configuration of protocol parameters
- Configurable pass/fail criteria
- Parameter files for varying usernames, passwords, filenames, and more
- User-uploadable and automatic content generation for writing, reading, and verifying

Network Configuration

- Millions of simulated IP and MAC addresses
- VLAN support
- TCP parameters configuration

Load Profile

- Specify the number of concurrent users, new users per second, bandwidth or throughput
- Multiple load profiles in a single test
- Run multiple realistic user workloads simultaneously

Automation

- Test parameters can be specified at run-time
- Statistics reported dynamically during the test
- Test Execution Rules triggered by test statistics

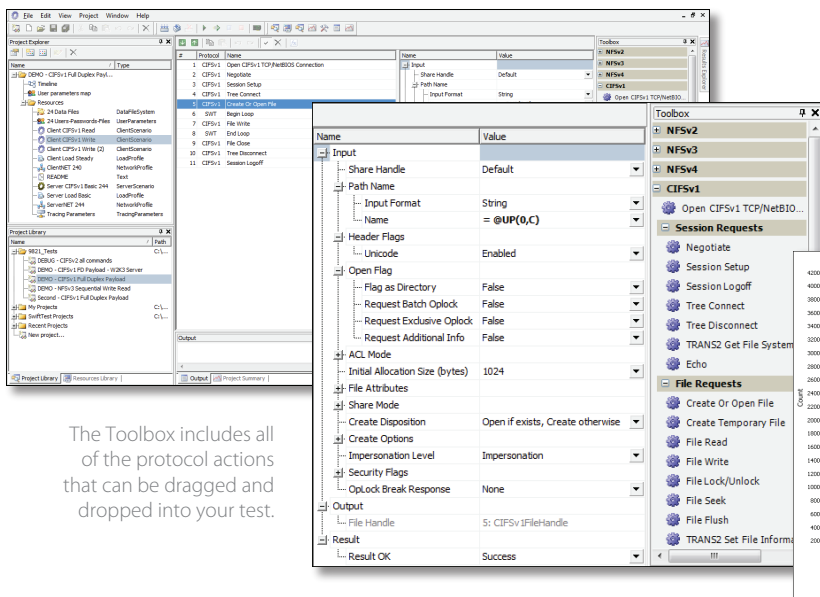
Reporting

- Protocol and network statistics including per-command response time and errors
- Extensive built-in reports
- CSV result export
- PCAP capture

Environment Flexibility

- Multiple appliances can be used in a single test, and multiple testers can run simultaneous tests on a single appliance

SwiftTest Test Development Environment

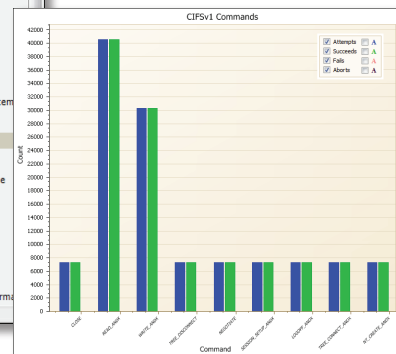


The Toolbox includes all of the protocol actions that can be dragged and dropped into your test.

The SwiftTest TDE is a graphical application based on .NET that runs on a customer-supplied workstation running Microsoft Windows 7, Windows Vista® or Windows XP®.

Test Set-Up

- Sample tests and wizards
- Graphical UI enables fast parameter changes
- Toolbox that includes drag-and-drop lists of actions



Reporting options include per-command response time reports.



3255 Scott Blvd., Suite 2-101 • Santa Clara, CA 95054
408.716.7117 • www.swifttest.com

© 2011 SwiftTest, Inc. All rights reserved. All trademarks are property of their respective owners.

Get in touch today to schedule a demo.